

2023

V.17 EFFECTIVE
MARCH 1, 2023



COLUMBARIUM[®]
by Design




The Eternal Niche[®]
FAMILY OF BRANDS



COLUMBARIUM®
by Design

CONTENT

OUR ADVANTAGES	03
IN-GROUND NICHE	04
COMPONENTS OF OUR	
PATENTED IN-WALL NICHE SYSTEM	11
IN-WALL NICHE	12
TYPES OF WALLS	14
ACCESSORIES – ROSETTES	16
ACCESSORIES – LED LIGHTING	17
OUR NICHE SYSTEMS COMPONENTS	
BENEFITS	18
NICHE PERGOLAS DESIGN EXAMPLES	21
OUR PROJECTS	23
PROJECTS UNDER CONTRACT	40
PROJECTS UNDER CONSTRUCTION	42
PROJECTS ON THE DRAWING BOARD	43
TESTIMONIALS	50



The Eternal Niche®
FAMILY OF BRANDS



Columbarium by Design is Committed to Manufacture the Most Versatile and Profitable COMPLETELY MADE IN AMERICA Niche System in the Market. We Deliver Turn-Key Projects Using the Most Forward and Modern Designs, Largest Capacity Niches in the Market that will Last for Eternity, the Only True In-Ground Niche on the Market, Architectural Design and Engineering services, construction process supervision, and Professional Marketing Services to Help you Obtain your Return on Investment Faster

Our Advantages

- Indoor and Outdoor Applications with The Same products.
- We offer the Only True In-Ground Niche in the Market.
- Proudly Engineered and Manufactured in America out of American sourced Materials and Components.
- Versatility to Adapt into Any Existing Design and Construction. Fast and Easy Installation.
- Our Niches are High Capacity and can Accommodate Large and tall Urns.
- Architectural Design and Engineering services.
- Personalized Professional Consultation and Guidance on the Design of your Columbarium and Cremation Gardens.
- Numerous Color Options and Combinations. Various Accessories to Complement your Niches.
- Other Than Cleaning the Front Covers and Lids, Our In-Ground and In-Wall Systems are 100% Maintenance Free.
- Super Lightweight and Strong.
- Won't Crack or Deform Under Extreme Weather Conditions.
- Free Financial and Return-On-Investment Study.
- Best Value in The Market.
- Personalized Service from Start to Finish "With You all the Way".
- Simple Pricing.
- Free Professional Advice on Structuring your Pricing and Selling Policies.
- Custom Sizes Upon Request (Minimum Order May be Required).

We Proudly Offer

The Only True In-Ground Niche on the Market

Single & Double Deep In-Ground Niches

Highlights

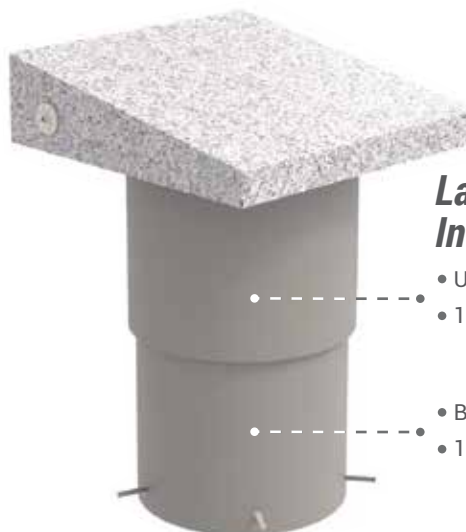
1. You are not obligated to use a certain kind and shape of urn; your families have more freedom to choose the urn of their liking.
2. Urns are fully accessible after being inurned
3. X-Large - 21" x 21" memorializing surface area with available memorializing templates from 1 to 12 names
4. Small - 12" x 12" memorializing surface area with available memorializing templates from 1 or 2 names
5. Can be memorialized with either Roto Engraving, Laser Engraving or even Sand Blasting
6. Maximizes your ground space with a High Capacity - Small Footprint
7. It can be installed anywhere as long as you can dig a hole
8. It won't break or deform under pressure
9. No water penetration
10. Inert to degradation and deterioration, dirt and humidity will not rust it nor damage it. It will last forever
11. No maintenance needed
12. Patented design made out of thick and strong polyethylene
13. Reinforced Anchoring and Security Systems
14. Protective Weather Gasket

15. PROUDLY ENGINEERED AND MANUFACTURED IN THE USA



Large Single Deep In-Ground Niche

- Urn Chamber
- 15" Diameter x 12" Deep



Large Double Deep In-Ground Niche

- Upper Urn Chamber
- 15" Diameter x 12" Deep
- Bottom Urn Chamber
- 14" Diameter x 12" Deep

Small Single Deep In-Ground Niche

- Urn Chamber
- 7" Diameter x 7" Deep



Capacity Disclaimer:

Niche Inurnment Capacity Depends on the Size and Shape of the Urns

**High Capacity
with a Small Footprint = High
Profitability**



Capacity Disclaimer:
Niche Inurnment Capacity Depends on the Size and Shape of the Urns

In-Ground Niche Urn System

Large Double Deep In-Ground Niche Urn System

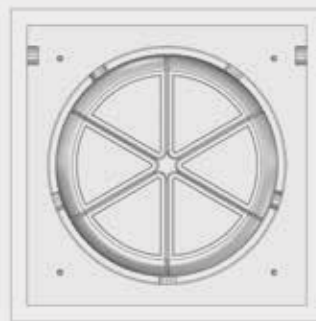


[available urn configurations]

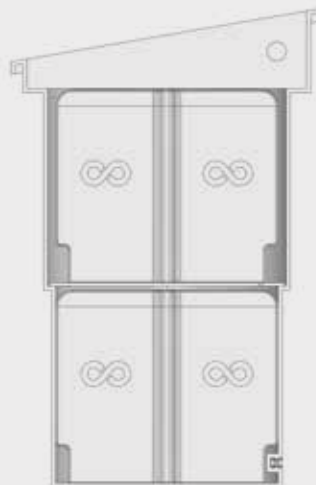
Coming Soon



[perspective view]



[plan view]



[section view]



INTELLECTUAL PROPERTY DISCLAIMER

THE INFORMATION CONTAINED IN THIS DRAWING IS THE SOLE PROPERTY OF COLUMBARIUM BY DESIGN, LLC AND IS PROTECTED BY U.S. PATENT LAWS.
ANY REPRODUCTION, IN PART OR AS A WHOLE, IN ANY KIND WITHOUT THE WRITTEN AND EXPRESSED PERMISSION OF COLUMBARIUM BY DESIGN, LLC IS STRICTLY PROHIBITED.



Large Single Deep In-Ground Niche Urn System



[available urn configurations]

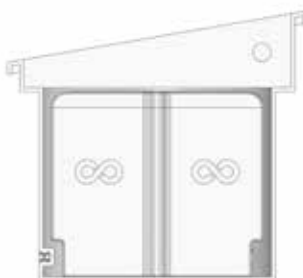
Coming Soon



[perspective view]



[plan view]



[section view]



INTELLECTUAL PROPERTY DISCLAIMER

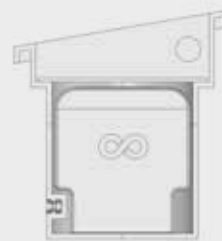
THE INFORMATION CONTAINED IN THIS DRAWING IS THE SOLE PROPERTY OF COLUMBARIUM BY DESIGN, LLC AND IS PROTECTED BY U.S. PATENT LAWS. ANY REPRODUCTION, IN PART OR AS A WHOLE, IN ANY KIND WITHOUT THE WRITTEN AND EXPRESSED PERMISSION OF COLUMBARIUM BY DESIGN, LLC IS STRICTLY PROHIBITED.

Small Single Deep In-Ground Niche Urn System

Coming Soon



[plan view]



[section view]



[perspective view]

[available urn configurations]



Flower Vases Large & Small

Now
AVAILABLE



In-Ground Niche Key Features



High Capacity
In-Ground Niche



Watertight



Easy
To Install



Custom
Memorialization



Capacity Disclaimer:
Niche Inurnment Capacity Depends on the Size and Shape of the Urns

In-Ground Niche Installation Tool Examples



Click to Watch Our
Installation Instructional Video

In-Ground Niche Installation Process



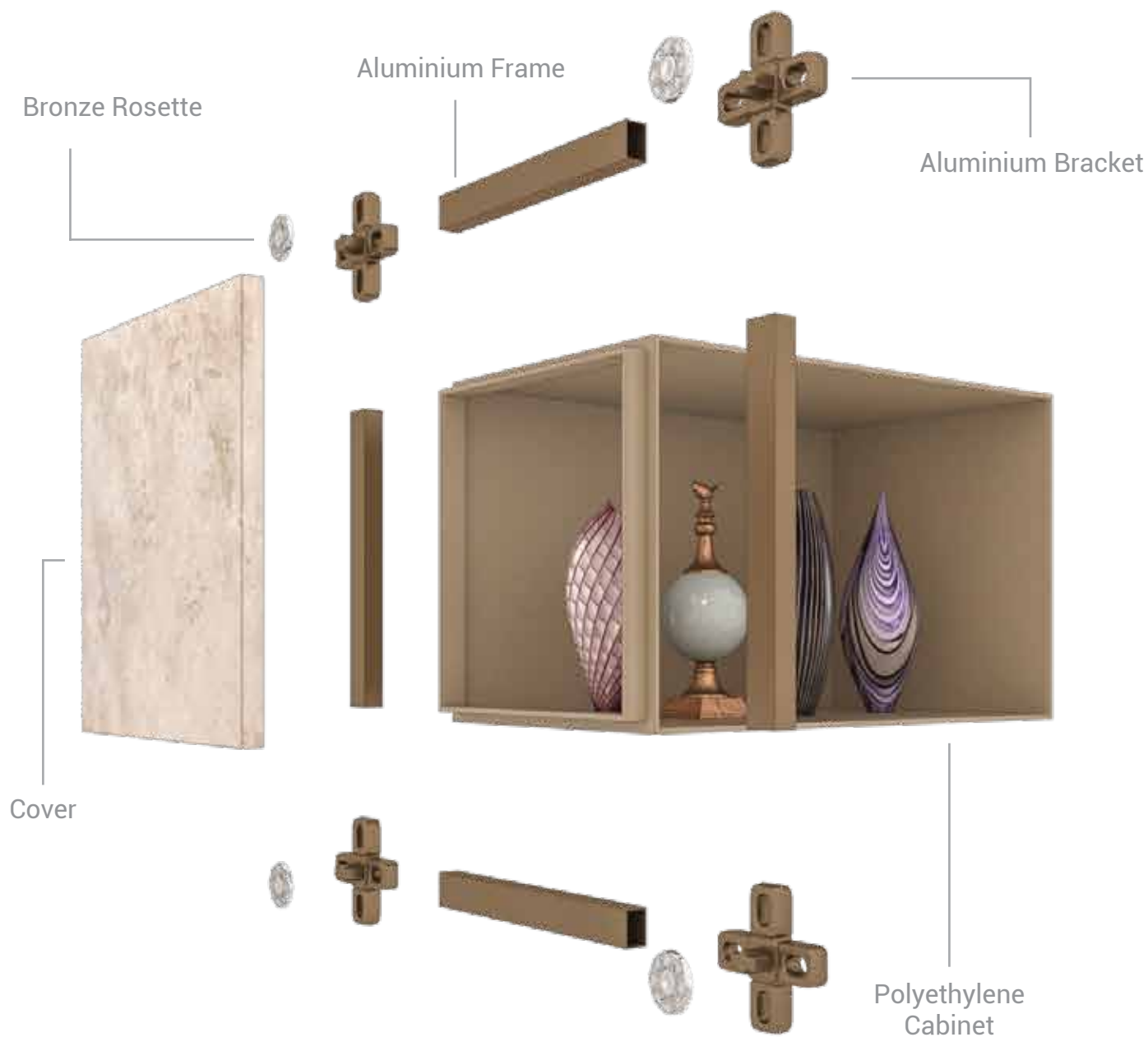
*Santa Fe Memorial Gardens
Jardin Familiar
(Santa Fe, NM)*



*The Grandview Legacy Trail
(Maryville, TN)*

*High Capacity
In-Ground Niche*

Components of our Patented In-Wall Niche System



Capacity Disclaimer:
Niche Inurnment Capacity Depends on the Size and Shape of the Urns

Cabinet A

SINGLE WIDE
DOUBLE DEEP
15"w X 15"h X 24"d

Side View



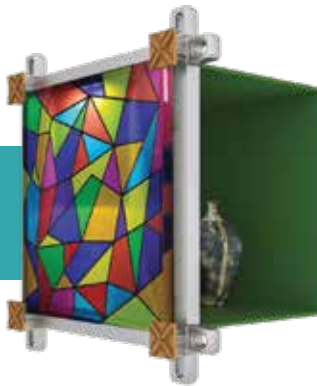
Top View



Cabinet B

SINGLE WIDE
SINGLE DEEP
15"w X 15"h X 12"d

Side View



Top View



Cabinet C

SINGLE WIDE
DOUBLE DEEP
CONICAL
15"w X 15"h X 24"d

Side View



Top View



INTELLECTUAL PROPERTY DISCLAIMER

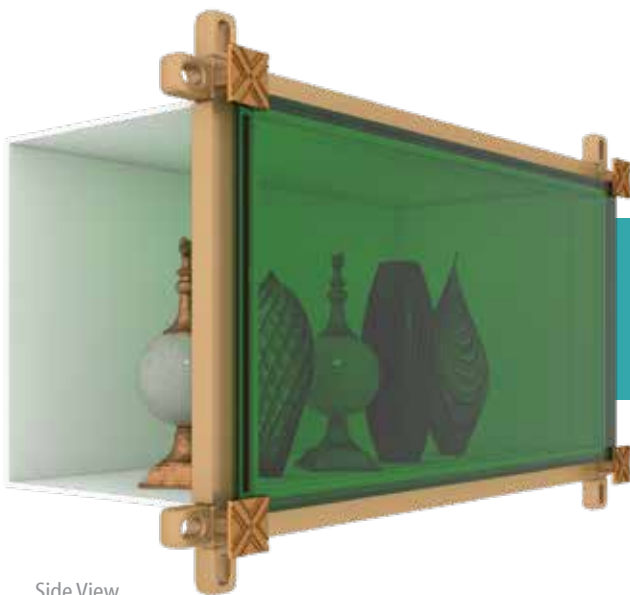
THE INFORMATION CONTAINED IN THIS DRAWING IS THE SOLE PROPERTY OF COLUMBARIUM BY DESIGN, LLC AND IS PROTECTED BY U.S. PATENT LAWS.
ANY REPRODUCTION, IN PART OR AS A WHOLE, IN ANY KIND WITHOUT THE WRITTEN AND EXPRESSED PERMISSION OF COLUMBARIUM BY DESIGN, LLC IS STRICTLY PROHIBITED.

Top View

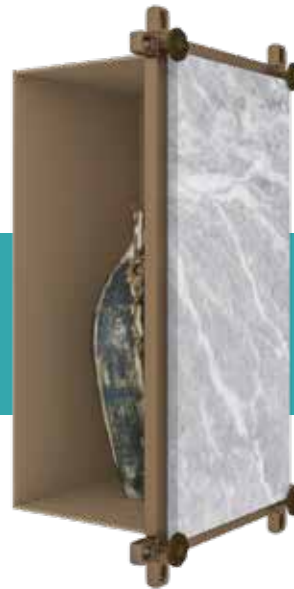


Cabinet F

DOUBLE WIDE
SINGLE DEEP
30.5"w X 15"h X 12"d



Side View



Front View



Top View

Capacity Disclaimer:
Niche Inurnment Capacity Depends on the Size and Shape of the Urns

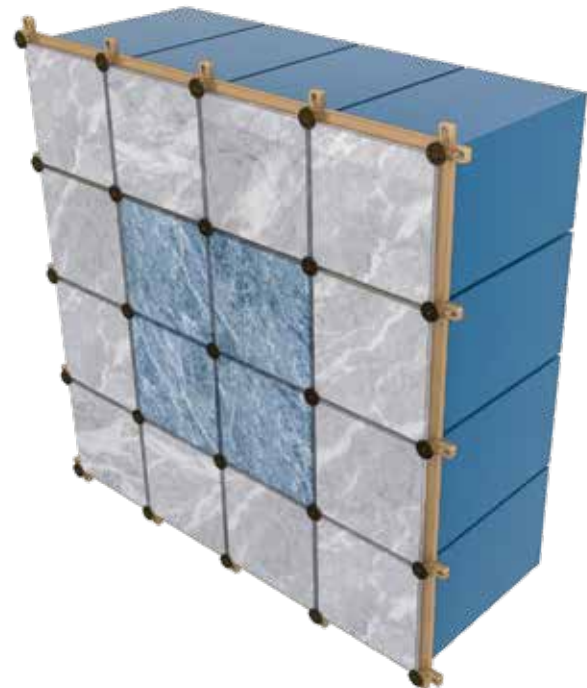
Types of Walls



Cabinet A,B & F

Straight Walls

With various urn capacity options and our patent pending designs, we can create and accommodate to any straight wall width and height. Depending on the urns shape and size and inurnments management technique, our niches capacity can be for many generations, and with our wide array of front cover choices and our accessories, we can make your straight wall stand out from anything else you have seen.



INTELLECTUAL PROPERTY DISCLAIMER

THE INFORMATION CONTAINED IN THIS DRAWING IS THE SOLE PROPERTY OF COLUMBARIUM BY DESIGN, LLC AND IS PROTECTED BY U.S. PATENT LAWS. ANY REPRODUCTION, IN PART OR AS A WHOLE, IN ANY KIND WITHOUT THE WRITTEN AND EXPRESSED PERMISSION OF COLUMBARIUM BY DESIGN, LLC IS STRICTLY PROHIBITED.



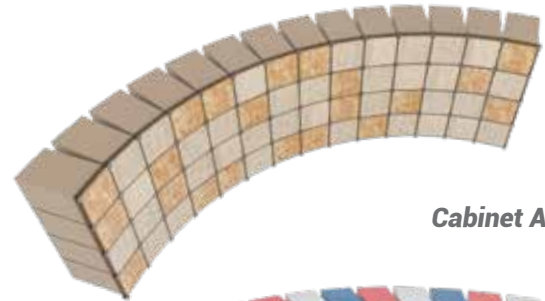


Circular Walls

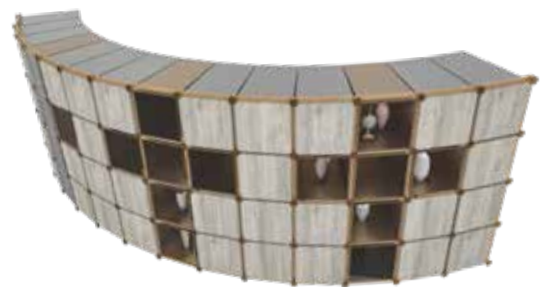
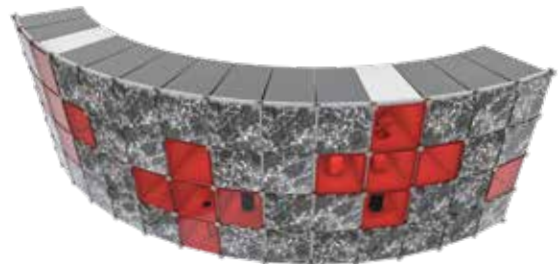
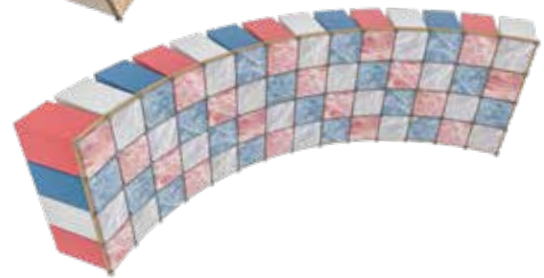
For our circular walls, we can face the niche opening in or out. As with our straight walls, we can use niches that can hold between 1 and 4 niches. Our facing-out applications use a specially design niche that tapers in towards the back that allow us to achieve the circular contour. We need a minimum diameter of 24 ft to achive a facing out circular wall is 24 feet.



Benet Hill Monastery - Cremation Garden
(Colorado Springs)



Cabinet A,B & E



Cabinet C

Capacity Disclaimer:
Niche Inurnment Capacity Depends on the Size and Shape of the Urns

Accessories



White and Red Bronze Rosettes

Traditional Round

Contemporary Square



Antique



Polished

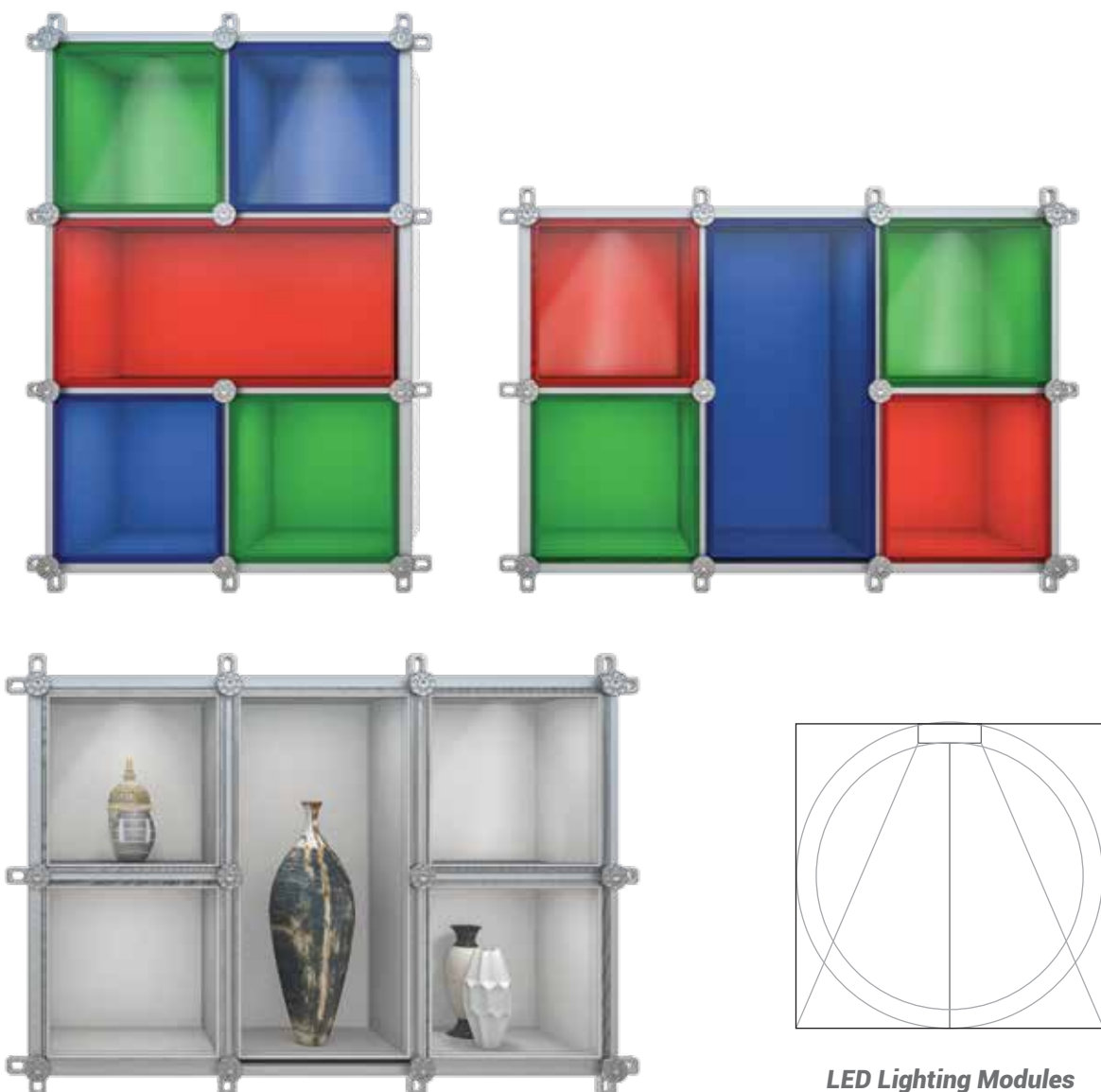


Weathered

Accessories

LED Lighting Modules

Our LED system was designed specifically for Columbarium by Design and we are the only company that utilizes this product. Our lighting modules are manufactured in the USA with the highest quality in materials and workmanship and are designed be used indoors and outdoors. They can be installed in tandem, individually or in any way to form shapes with illuminated niches; lighting will always be an elegant feature for your Columbarium. This is the perfect accessory to bring up the value of your niches, a small investment can raise your ROI considerably.



LED Lighting Modules

Our Niche Systems Components Benefits

Cannot be broken

You could take a steel tube to our niches and nothing would happen, except that you would only feel recoil and might lose your grip on the tube. Low-Density Polyethylene resin is 90% less dense than traditional materials making it indestructible, since it can bend and absorb impact without breaking. Afterward impact or movement, the niche returns to its proper position with no permanent damage.



Img. In-Wall Niche

They are Waterproof

Polyethylene resin is also non-hydroscopic and non-porous, so unlike stone or concrete products, resin does not allow for any erosion or leaking. Anything you put inside stays inside, and things that is outside, stays outside. Polyethylene Resin products were made to be kept outside without taking abuse from weathering. The elements will not damage or corrode the resin. Concrete and stone products are porous and eventually do allow water to penetrate.



Img. In-Wall Niche Waterproof

They Freeze and Thaw without a problem

Another great quality featured on the amazing list of benefits is the extreme freeze and thaw abilities. A characteristic that sets resin a league above other materials is the capacity for withstanding extreme conditions. Over extreme and rapidly changing temperatures, Polyethylene resin is un-disturbed. Almost any and all other



Our Niche Systems Components Benefits

They are super Lightweight

One of our main advantages over other products is that our niches are very lightweight for installation. This means that Columbarium by Design Niches are lighter to ship than stone or precast concrete niches. That translates into savings on logistics, transport, handling, and installation. A stone or precast concrete niche is very heavy and more difficult to handle. It requires more padding and packing, and there is still a chance it will be damaged during transit. A damage product costs much more when returning and exchanging it, than just the shipping. In addition, rescheduling a construction crew for installation can be quite costly.



Small In-Ground Niche

Our Niches are a fraction of the weight of ones of stone or precast concrete, so our Niches are not difficult for the shipping crews to work with. There is no need to hire secondary crews and rent heavy equipment or cranes and it are virtually indestructible. Unlike stone or concrete, the chances that a polyethylene Niche would arrive at your site with cracks and damage from shipping and handling are null.



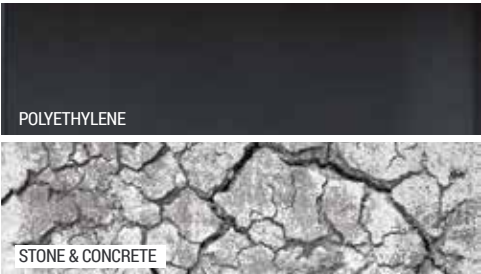
Img. Polyethylene Colors

They are Beautiful

Polyethylene Resin comes in a rainbow of solid colors, along with several blends that mimic the look and feel of concrete, Terracotta clay or natural stone. It is surprising how much it does look like the material it mimics.

POLYETHYLENE	STONE & CONCRETE
Indestructible	Cracks
Durable	Weathers
Non-Porous	Porous
Lightweight	Heavy
Transportable	Difficult to Move
Affordable	Expensive
Recyclable	Single Use

Img. Differences



Img. Durability

Proven Technology

Rotational Molding is one of many plastics manufacturing processes producing extremely durable parts and components with an exceptionally long usable lifespan. Rotational Molding, also known as rotomolding or rotocasting is a thermoplastic process for producing parts that was developed in the 20th century, gaining much industrial traction in the 1960's.

It has begun growing immensely in popularity and functionality, thus growing in a larger demand in some industries in comparison to other plastics processes such as plastic injection molding, thermoforming or blow molding in some respects. The rotational molding process is preferred over many other plastics manufacturing processes because of its ability to manufacture durable, complex hollow products, which are virtually impossible to manufacture using the other processes.

Our Niche Systems Components Benefits

It has begun growing immensely in popularity and functionality, thus growing in a larger demand in some industries in comparison to other plastics processes such as plastic injection molding, thermoforming or blow molding in some respects. The rotational molding process is preferred over many other plastics manufacturing processes because of its ability to manufacture durable, complex hollow products, which are virtually impossible to manufacture using the other processes.



Timeless Metals

The aluminum we cast our brackets of and extrude our tubing, it does corrode but it does not rust. Rust refers only to iron and steel corrosion. Aluminum is prone to corrosion. However, aluminum corrosion is aluminum oxide, a very hard material that protects the aluminum from further corrosion. Aluminum oxide corrosion also looks a lot more like aluminum (dull gray to powdery white in color), so it isn't as easy to notice as rusted iron. But to prevent the corrosion we powder coat the brackets and anodize the tubing, with this we make our aluminum corrosion free and last forever.

For the stainless steel, we only use 18-8 Grade Stainless Steel. 18-8 grade stainless steel is celebrated for its superior corrosion resistance and can only show signs of corrosion when exposed to salt, but it actually does not compromise the integrity of the material.

And as we all know Bronze does not rust, rust is a word that refers specifically to iron oxide. So only iron, steel, and other iron alloys can rust. What bronze and other copper alloys do is patina, which is a similar chemical reaction but with very different results which it can actually look pretty nice. Our rosettes are come with 5 coats of a clear protective solution that depending on the conditions can last up to 10 years without patina.

Solid Rock

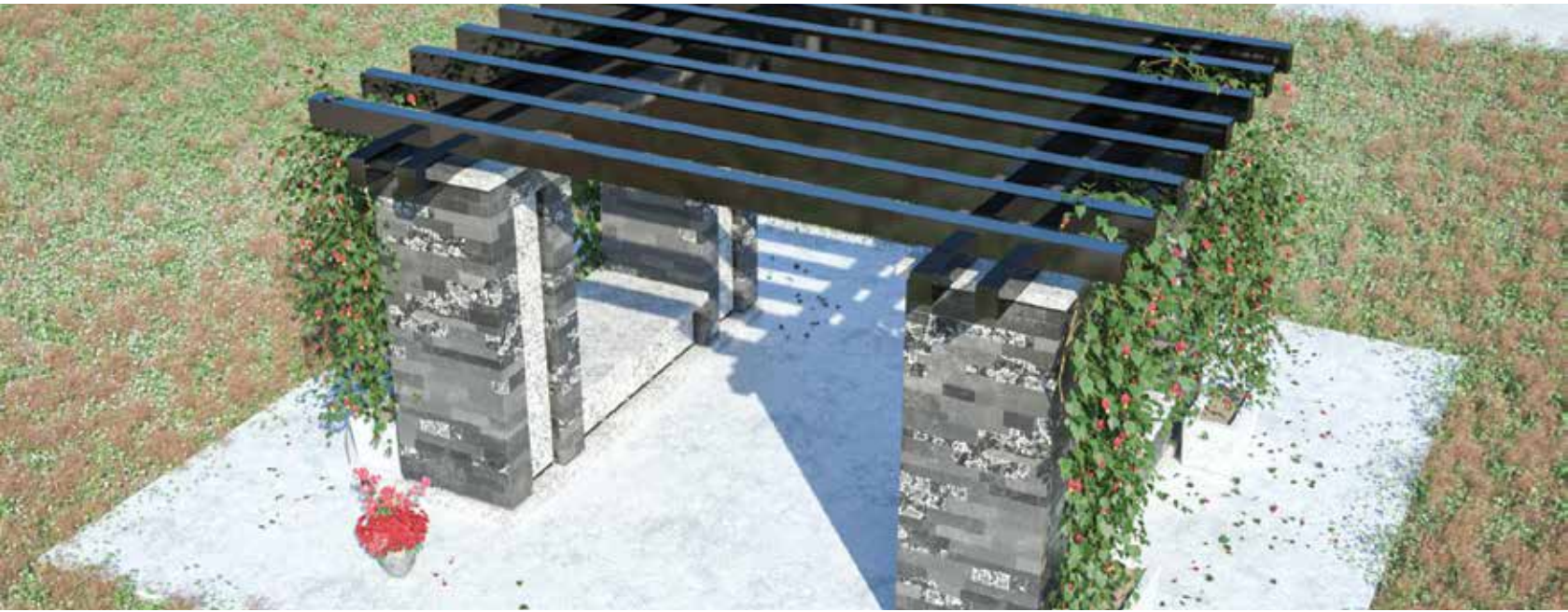
Because of its appealing and unique look, granite is often used for high-end construction, including monuments (Mount Rushmore is mostly granite), stairs, fireplace mantels, floor tiling, countertops, and, of course, niche and mausoleums covers and lids. Granite stone is highly popular to manufacture Columbarium and Mausoleum covers and lids, and for good reason. Granite comes in many different colors and can be utilized in any projects that have diverse design styles.

Granite stone is exceptionally durable, which means it will stand up to all the wear and tear it is being used for. Granite can be sealed to increase their stain resistance and prevent them from being scratched easily. Granite has a natural look, which lends itself well to monochromatic or contemporary styles, and comes in a variety of unique styles and patterns that can add depth and color to your Niches.

Granite Niche and Crypt Covers and lids are easy to maintain and simple to clean. Soap and water are enough to clean them and will leave the covers and lids looking fresh and shiny, and if you happen to get a divot or break in your granite cover, it is easy to fix or replace. As granite is very tough, it is unlikely that you will have to replace an entire cover or lid if damage does occur.

The main advantages of granite covers and lids are that they're natural, beautiful, low-maintenance, and ultra-durable. As they are easily memorialized either with Roto Engraving, Lazer Engraving or even Sand Blasting.

Niche Pergolas Design Examples



6 NICHES HIGH
WITH CENTER BENCHES
& WOOD BEAMS



6 NICHES HIGH WITH CENTER BENCHES
& WOOD BEAMS



Marketing Services

Build It and They Will Come Doesn't Cut It Anymore, After Building It You Have to Advertise It And Go Out And Sell It

Columbarium by Design not just designs, manufactures and builds unique and modern Columbaria, Mausoleums and Cremation Gardens, we also help you **Advertise and Sell** your beautiful project so you can obtain your Return on Investment the fastest way possible.



Finding ways to get your message to people is key to implementing a results-oriented marketing strategy for your New Columbarium, Niche Garden or Mausoleum. You also need to market to those who have an urgent need to make funeral arrangements. To cover your bases, Columbarium by Design Marketing Services can help you establish a market specific marketing strategy that will attract people who still look for funeral solutions in traditional ways, as well as those who rely on the Internet for answers.

"Columbarium by Design Marketing Services, The Right Tool to Show Off Your Beautiful Project"

Chester T. French Mausoleum - Side Alcoves Niche Walls ***(Albuquerque, NM)***



Chester T. French - Forever & Always Columbarium ***(Albuquerque, NM)***



St. Matthew Catholic Church - St. Matthew Cemetery (Winter Haven, FL)



St. Paul's Rock Creek Section J Cremation Garden (Washington, DC)



Christ Church Episcopal - Baptistry Columbarium (Laredo, TX)



Lake View Cemetery - Wade Pond Niches (Cleveland, OH)



Benet Hill Monastery - Cremation Garden (Colorado Springs)



**Smith, Life & Legacy - The Grand View Legacy Trail Columbarium & Cremation Garden
(Maryville, TN)**

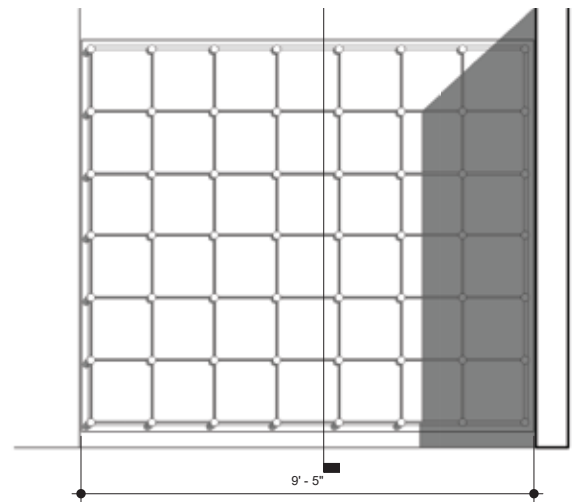


St. Stephen's Catholic Cemetery - Cremation Garden Phase 1 (Hamilton, OH)



Sunset Memorial Park - Side Door Interior Niche Wall

(Albuquerque, NM)



Sunset Memorial Park Garden Mausoleums Infill Sections 1,2,3,4 & 5 (Albuquerque, NM)



Section 1
Completed

Section 2
Completed

Section 3
Completed

Section 4
Completed

Section 5
Completed



S-01



S-02



S-03



S-04



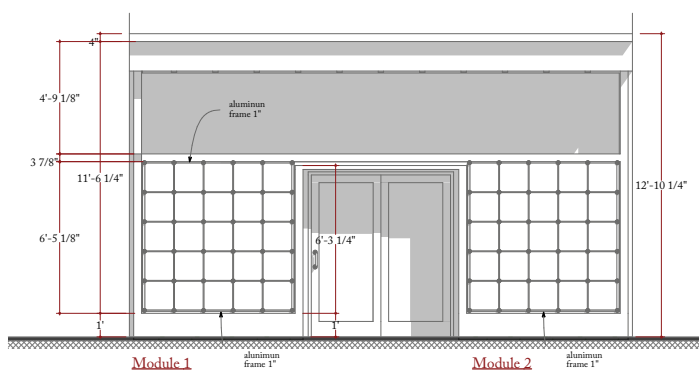
S-05

Santa Fe Memorial Gardens – Jardin Familiar

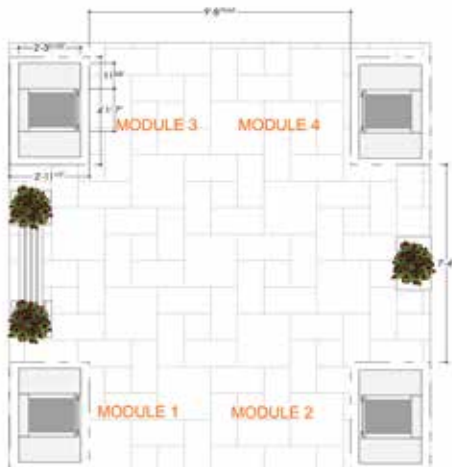
(Santa Fe, NM)



Roberts / Ashland County Memorial Park - Mausoleum Niche Wall
(Ashland, OH)



Roberts / East Lawn Memorial Park - Pergola Columns (Marietta, OH)



Horan & McConaty – Rocky Mountain Memorial Park ***(Centennial, CO)***



Santa Fe Memorial Gardens – Chapel of Light ***(Santa Fe, NM)***



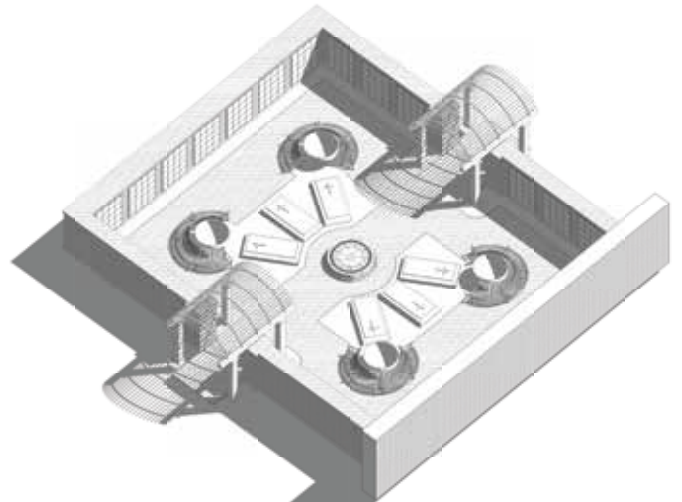
Santa Fe Memorial Gardens – Nichos de las Aguas ***(Santa Fe, NM)***



Masonic Cemetery - Octagon Columbarium ***(Las Cruces, NM)***



St. Mary Magdalene Catholic Church - Cremation Courtyard (Flint, TX)

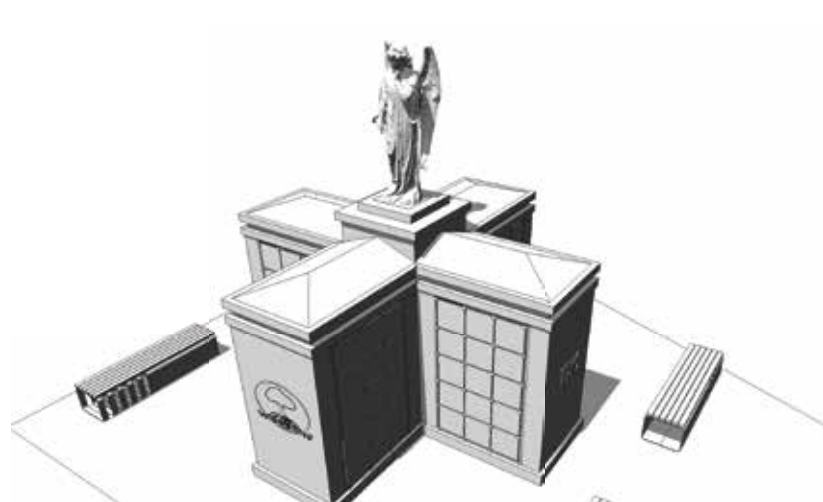
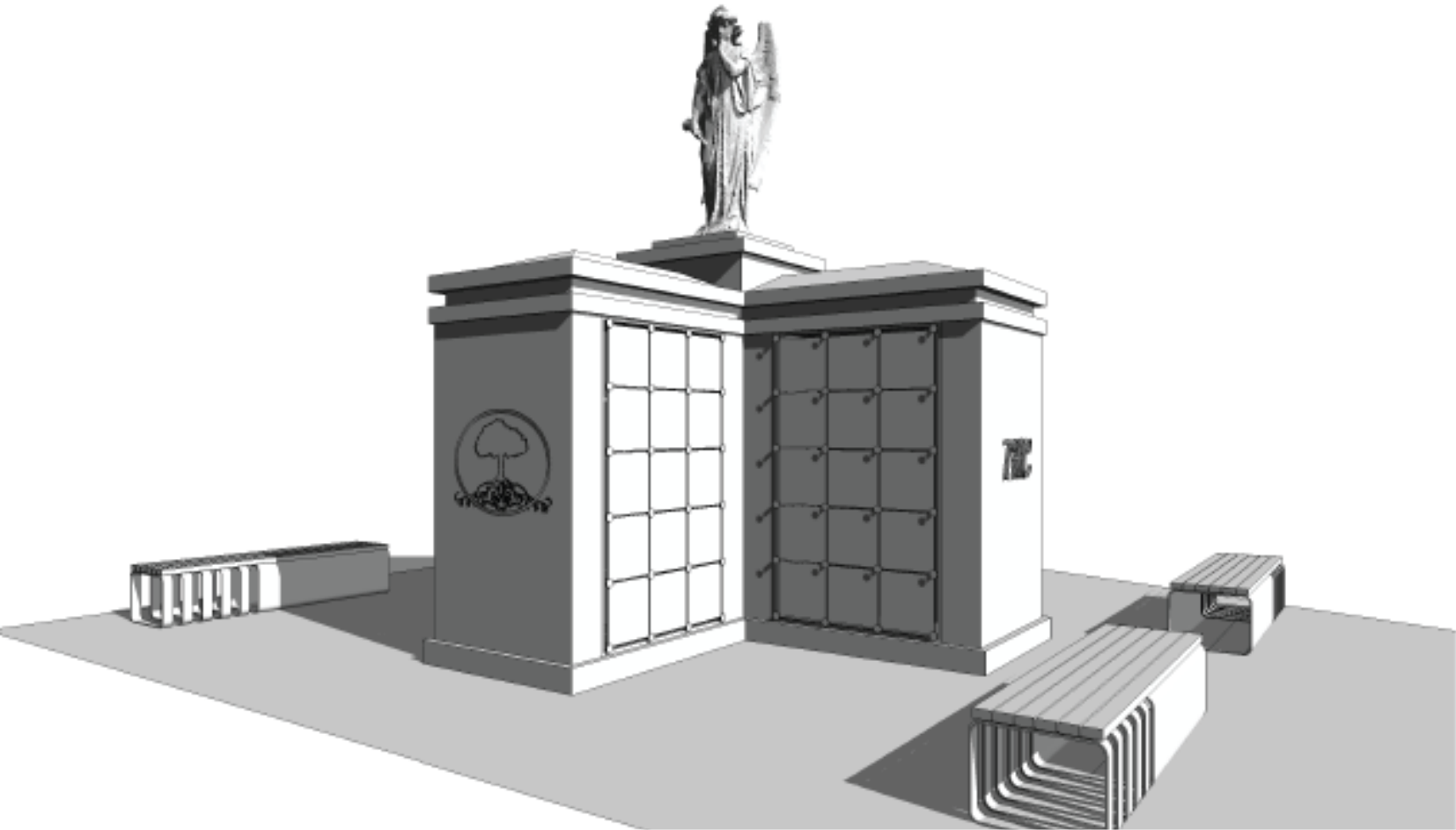




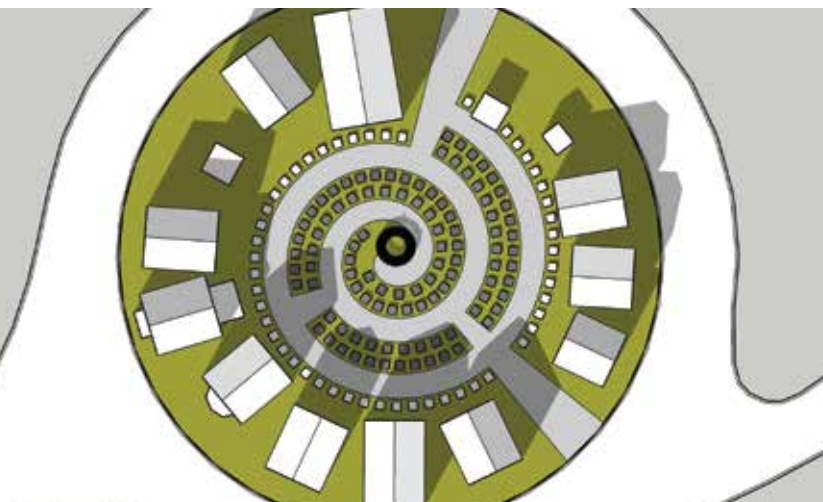
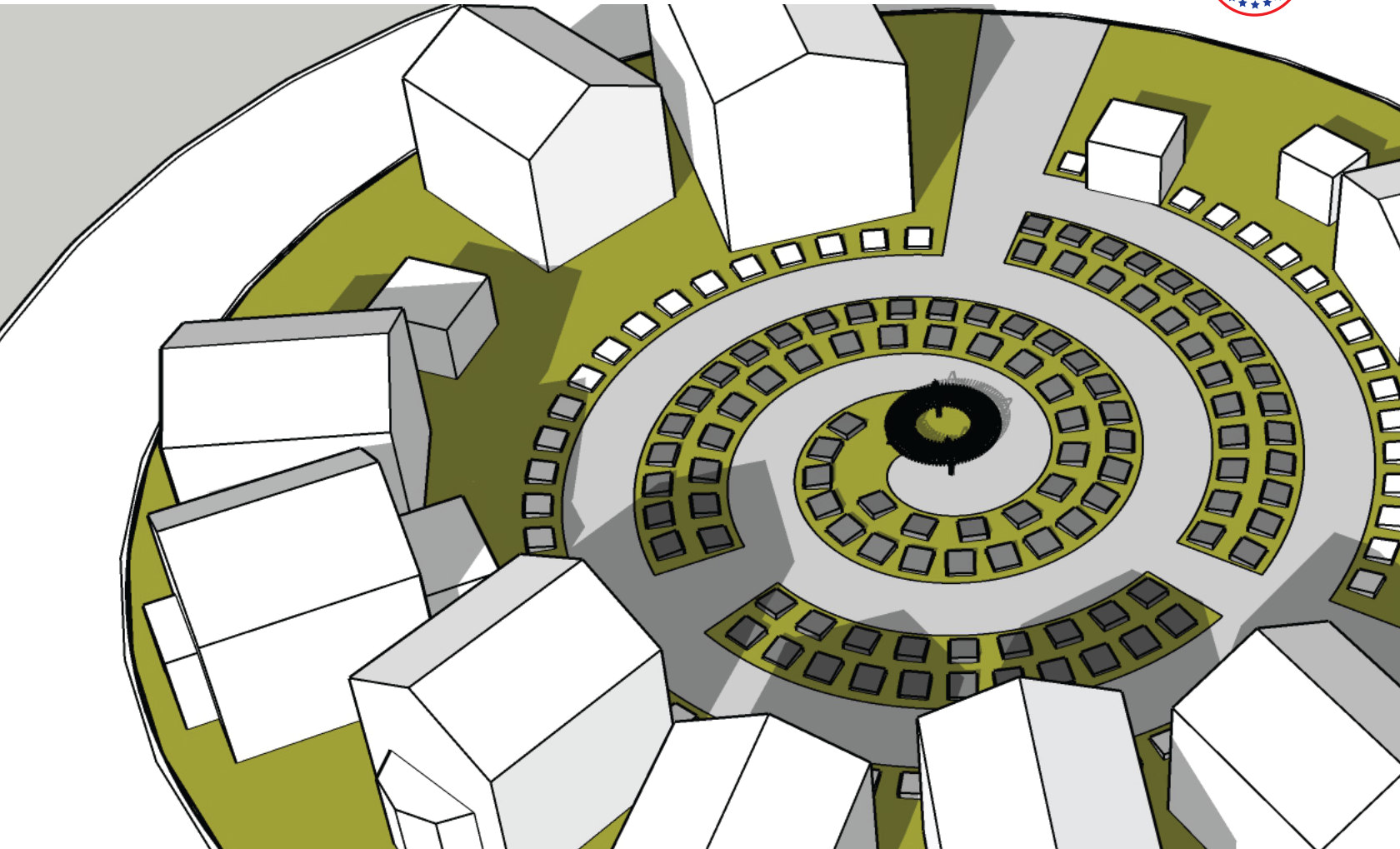
St. Mary's Visitation Catholic Parish Cemetery - Cremation Garden ***(Elm Grove, WI)***



Trice Hill Cemetery - Angel Columbarium ***(Oklahoma City, OK)***



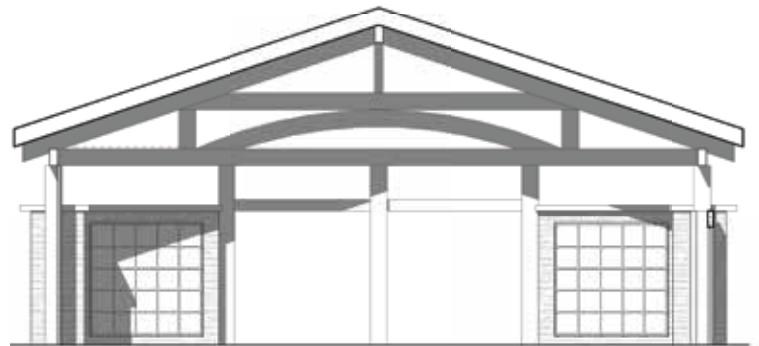
St. Paul's Rock Creek Episcopal Parish Cemetery - Cremation Garden
(Washington, DC)



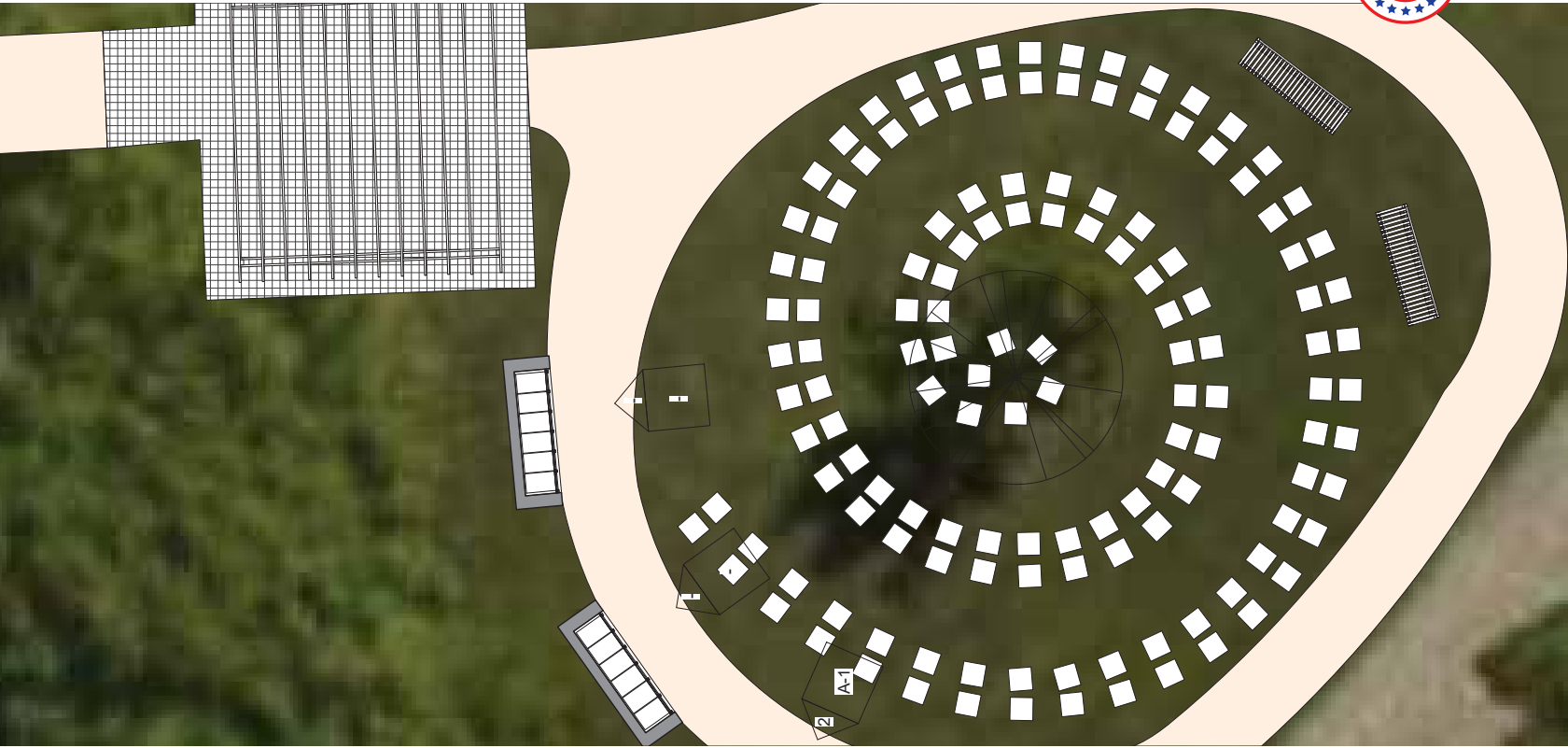
Holy Cross Catholic Church Cemetery - Cremation Garden (Santa Cruz, NM)



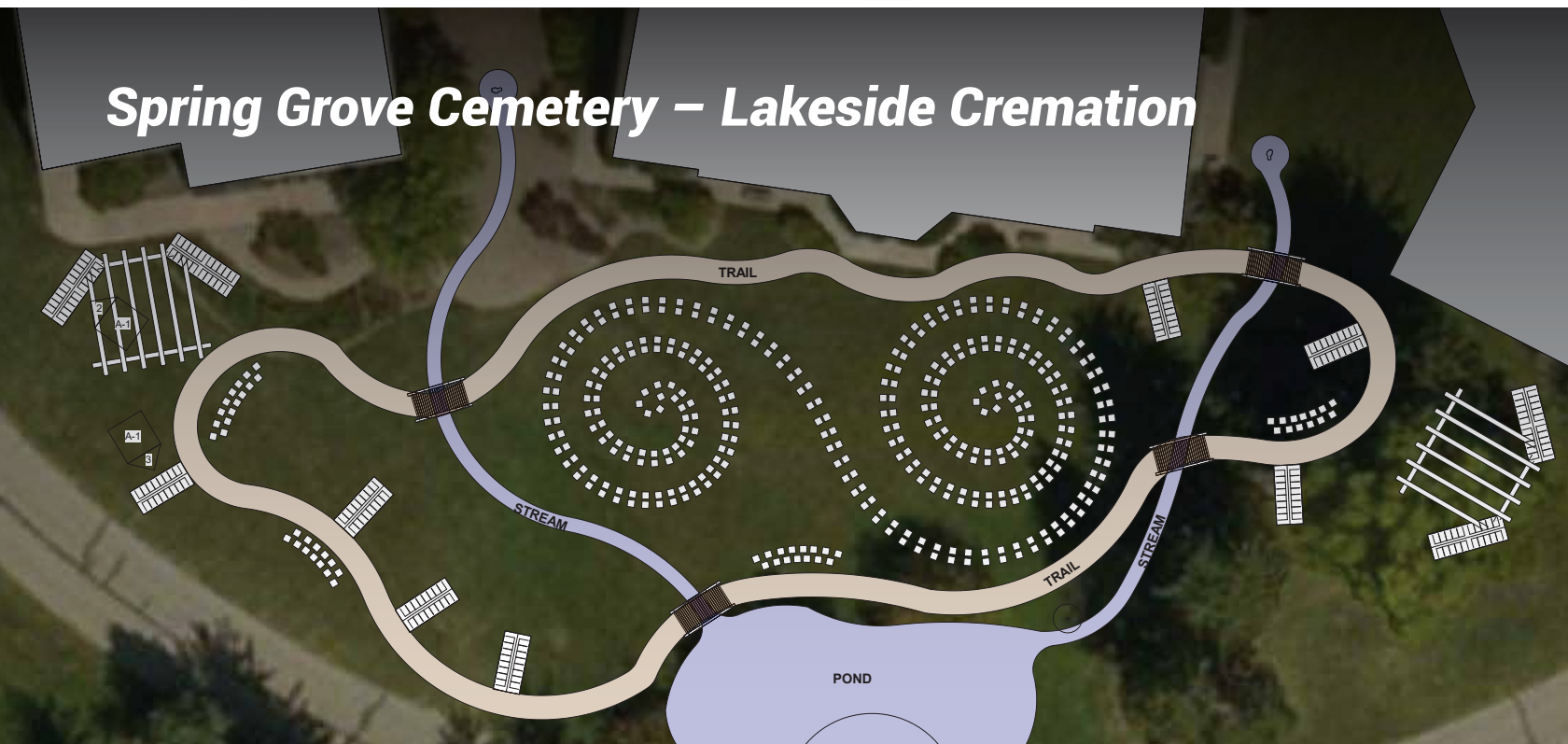
Lake View Cemetery - Mayfield Gardens Pavilion (Cleveland, OH)



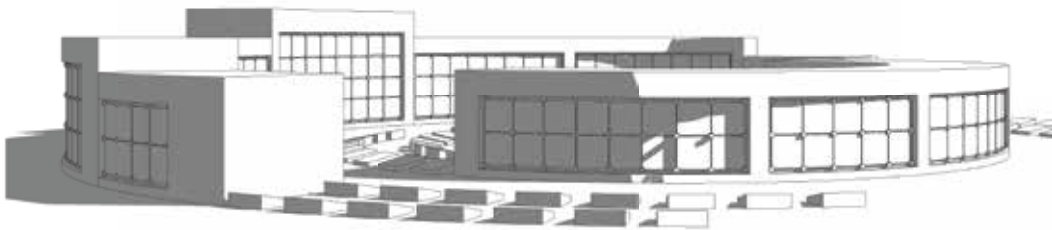
Spring Grove Cemetery – Cremation Trail Garden (Cincinnati, OH)



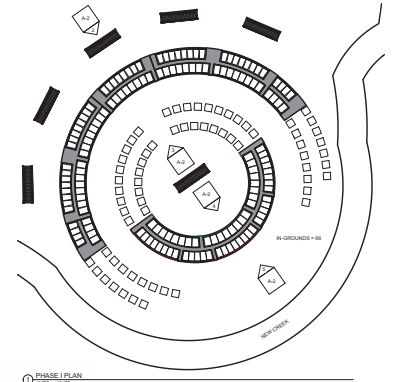
Spring Grove Cemetery – Lakeside Cremation



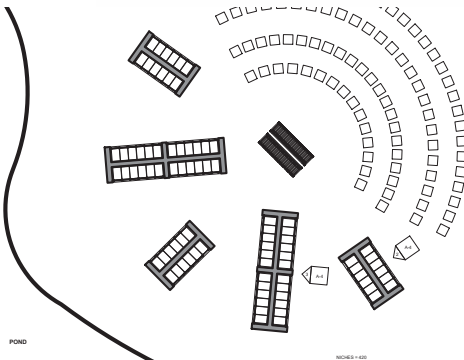
Ferncliff Cemetery – Creek Cremation Garden (Springfield, OH)



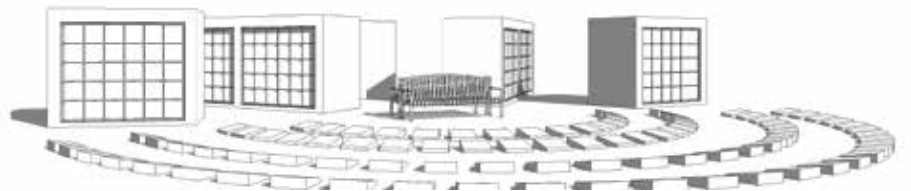
⑥ PHASE I - 3D 1



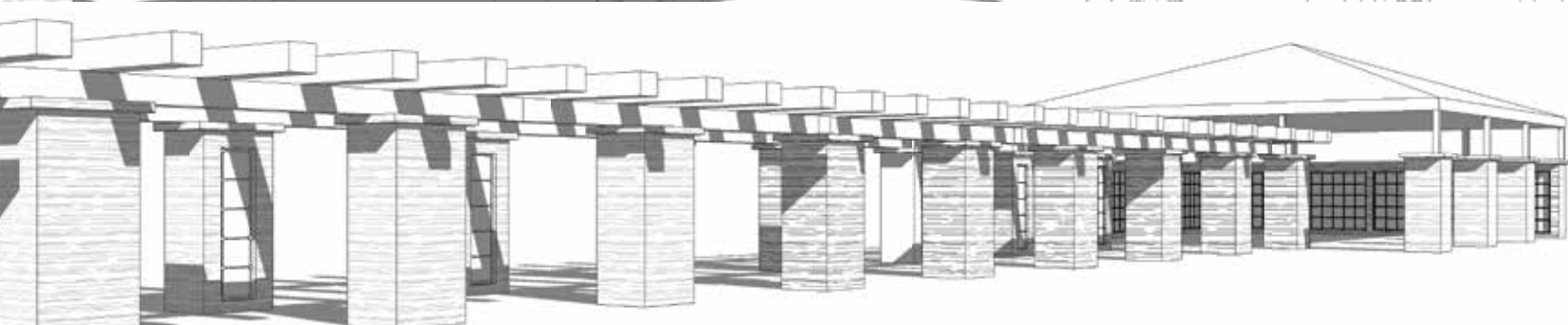
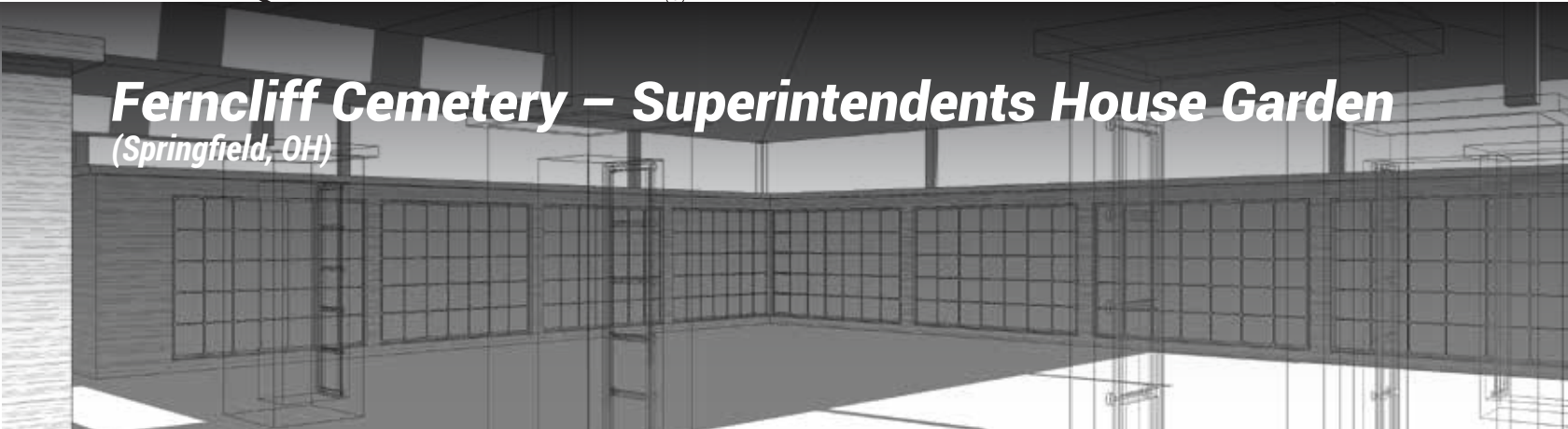
① PHASE I PLAN
1/8" = 1'-0"



⑥ PHASE III - 3D 3



Ferncliff Cemetery – Superintendents House Garden (Springfield, OH)



San Jose de Armijo - Cremation Garden ***(Albuquerque, NM)***



Testimonials

St. Matthew Catholic Church, St. Matthew Cemetery, Winter Haven, FL

For a small church cemetery, Columbarium by Design was the perfect solution to our needs as some of our Columbarium units reached capacity, being able to utilize land space along our Stations of the Cross pathway. Gerardo was very informative and helpful in describing his product and the installation process. We were very pleased of the fact that he made a trip to personally meet with our team and addressing our concerns making continued improvements to his product.

Fr. Nicholas O'Brien / Pastor

Christ Church Episcopal, Laredo, TX

"Our parish chose Columbarium's by design / the Eternal Niche after several months of research. Their prompt professional assistance and regular communication, and helpful design ideas made the process a pleasure. Their niches that allow great flexibility in urns, as well as the multiple options in niche size, and exterior coverings, and the very convenient design for opening and closing each niche by itself was a huge selling point. Their installation crew was professional and everything went as planned. We are very grateful and would highly recommend this great company."

Rev. Paul Frey / Pastor

Lake View Cemetery, Cleveland, OH

When Lake View was considering a columbarium near the historic Wade Chapel and Wade pond, we wanted to ensure the product was of the highest quality and blended with the appearance of the section. Gerardo and his team at Columbarium by Design (CBD) assured us of this from the beginning and did not disappoint. From initial design to final walkthrough, Gerardo was there every step of the way. Presenting us with different design ideas and options for a columbarium in a space that we struggled to find the right product for, was invaluable. The final product exceeded expectation and has been an exciting addition to Lake View's grounds. Gerardo's continued follow up after installation has been beneficial in knowing the support for his product and of Lake View adds to our confidence in future projects with CBD.

Andrew Bales, MSOL, MSM / Director of Family Service

Benet Hill Monastery, Colorado Springs, CO

In 2019, the Sisters of Benet Hill Monastery decided to expand St. Benedict Cemetery in Colorado Springs, Colorado with a columbarium. We contacted Gerardo Garcia, owner of Columbarium by Design. When we met with Gerardo, we made it clear that we did not want any trees to be cut down and we asked that the columbarium blend with the forest as he designed and constructed the Columbarium Garden. In the fall of 2020, he and his team accomplished our request with great integrity and beauty. The first phase of this project is completed. We have two attractive walls that have expanded our capacity to 68 niches. It is a stunning addition in our sacred forest on these holy grounds.

Sister Marie Therese (MT) Summers, OSB / Treasurer / Treasurer

Smith Life & Legacy, Maryville, TN

When my business partners decided to embark on a new initiative for our cemetery, we were so blessed to find Gerardo Garcia and his excellent team at Columbarium by Design (CBD). With hopes of helping our cemetery embrace the paradigm change of cremation, Gerardo helped us through every stage of the process – from initial ideas to concept development to construction and completion. CBD provided us with everything we needed to bring our initiative to full fruition...and it turned out even better than we hoped. I greatly appreciate Gerardo's personal interest in our cemetery and helping us conceive ideas that will better support the changing needs of my client-families. If you are looking for an update or some fresh new concepts for your cemetery, you will appreciate the professionalism and camaraderie of CBD. Please consider this a full 5-Star review.

C. Lynn Gibson Ph.D., DPhil, CFSP / Managing Partner

Sunset Memorial Park French Funerals-Cremations

"We have worked with many quality suppliers in our various projects, but Gerardo and his team are quickly becoming vital partners in all of our future expansion. The columbarium and mausoleum products and designs produced by Columbarium By Design offer us a level of flexibility, adaptability, and cost effectiveness that is unmatched with our other suppliers. Gerardo has the ability to integrate new property into old construction in a seamless way that has been a huge benefit to our cemetery.

They can design from scratch or adapt to an existing design/theme fluidly. In addition to the sheer flexibility of their designs and construction methods, they have enabled us to truly maximize limited existing space with high volume niche cabinets permitting multiple inurnments. The niche cabinets we've chosen are 15"H x 15" W x 24"D, allowing for oversize urns, or up to four standard urns per box. This capacity allows us to double or even quadruple the number of placements in the same footprint of space, maximizing both revenue and the utility to our families."

Chris Keller / Vice President

Santa Fe Memorial Gardens, Santa Fe, NM

"Columbarium by Design worked with us closely from start to finish and was flexible in accommodating the changes that take place in most major construction projects. They helped us in creating a new Santa Fe landmark that has been receiving positive comments from residents and from our religious communities."

Tim Rivera / Owner

Masonic Cemetery, Las Cruces, NM

"During the expansion of Masonic Cemetery, owned by Aztec Lodge #3 AF&AM, a gazebo was built with the intention of installing niches and creating a columbarium. We met Gerardo Garcia through our association with Sal Perches of La Paz-Graham's Funeral Home. Mr. Garcia came on site to visit with me to determine our needs in order to provide visual layouts of possible options. After much consideration, this option was chosen to best serve our customer's needs with both beauty and grace. Columbarium by Design, LLC. installed the niches in a timely and professional manner. Everyone we dealt with was courteous and a pleasure to work with. The staff of Masonic Cemetery would highly recommend this company to aid you in the design and implementation of your columbarium needs."

Eduardo Medina / Worshipful Master of Aztec

Perches Group, Cd. Juarez, Chih, El Paso, TX & Las Cruces, NM

"We have worked with Gerardo at both sides of the border and It is my pleasure to express our recognition to his professionalism. I am a dear friend of Gerardo and I recommend to anyone doing business with him. In fact, he is not just my friend, he is also my business advisor for my 4 Columbariums, 2 Mausoleums, 2 Cemeteries and 11 Funeral Homes."

Salvador Perches / President & CEO

American Cemetery Services, LLP Roberts Funeral Homes Inc., State of Ohio

"Our experience with Columbarium by Design on our first project with them was exemplary. Gerardo was great to work with starting from the design phase through the final installation. He had great ideas and insight, was attentive to our needs, and responded quickly to design plan changes. He was always prompt and communicated effectively throughout the process. We look forward to future projects with Columbarium by Design."

Kirk D. Roberts / Director of Sales

Horan & McConaty, Denver, CO

"Gerardo and his team have helped us design and implement cremation memorialization throughout our properties. We have made better decisions and improved our sales with Gerardo's advice and support. Integrity. Quality. Value. Service after the sale. All are reasons I rely on and recommend Columbarium by Design."

John J. Horan / President & CEO





COLUMBARIUM[®]

by Design


The Eternal Niche[®]
FAMILY OF BRANDS

Proud Active Member Of:



Click www.877-7Niches.com
or 642.437
Call 877-7Niches

SALES AND CONSULTING

Gerardo G. Garcia
Direct (720) 880-8055
g.garcia@theeternalniche.com

17301 W Colfax Avenue, Ste 404,
Golden, CO 80401
O: (303) 955-6662
F: (303) 955-6776

